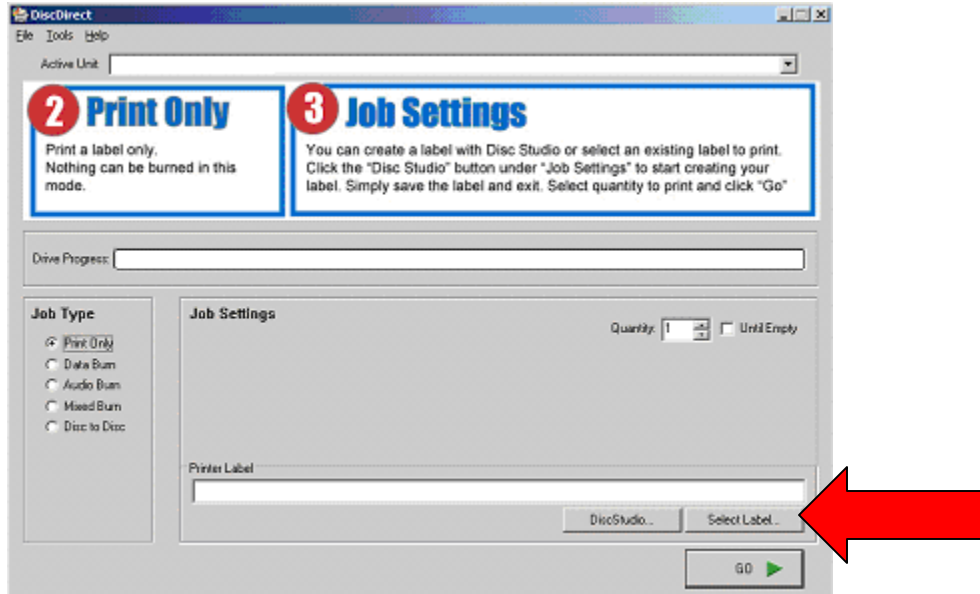


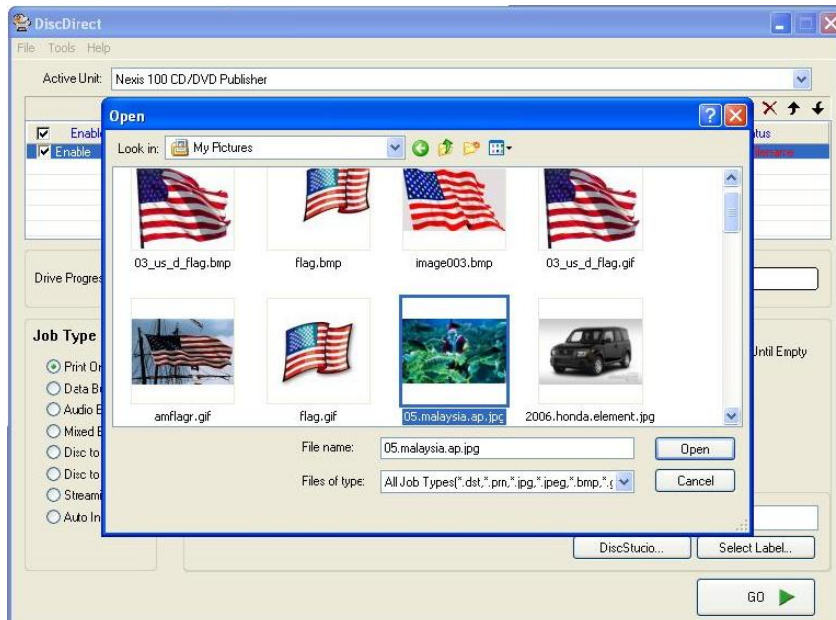


1. Open DiscDirect

2. Click the Select Label button.

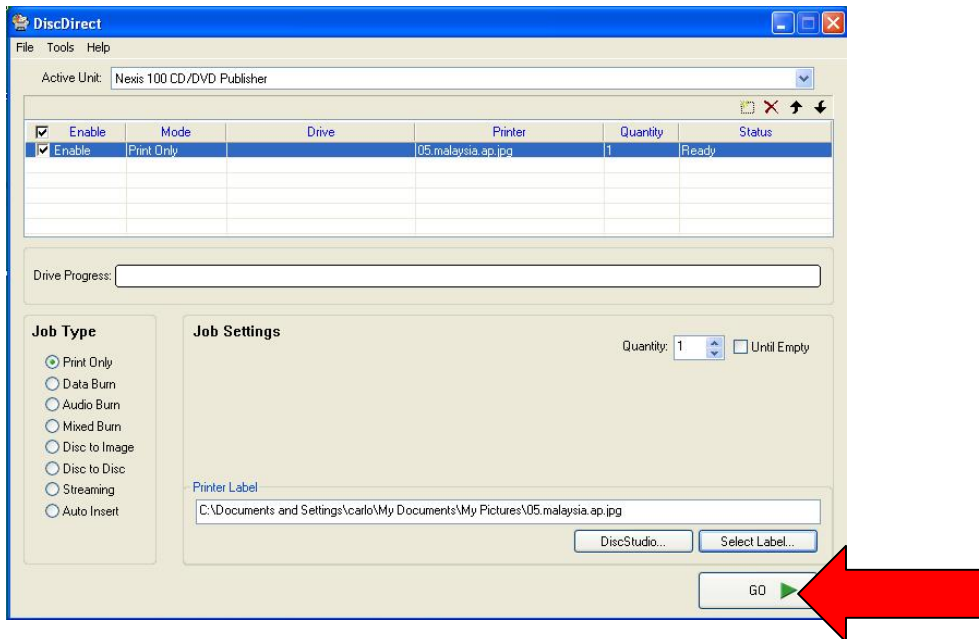


3. Select Label that you would like to print and click Open.





4. Click on Go



Printer Label shows the name of the current label in the job.

Quantity is where you can manually enter the number of discs you would like to label, or, you may put a check mark by *Until Empty*, which will print the selected label on every disc in the Input Basket

Disc Studio will launch **DiscStudio** to create a new label.

Select Label will allow you to open a label you have already created in **DiscStudio**.