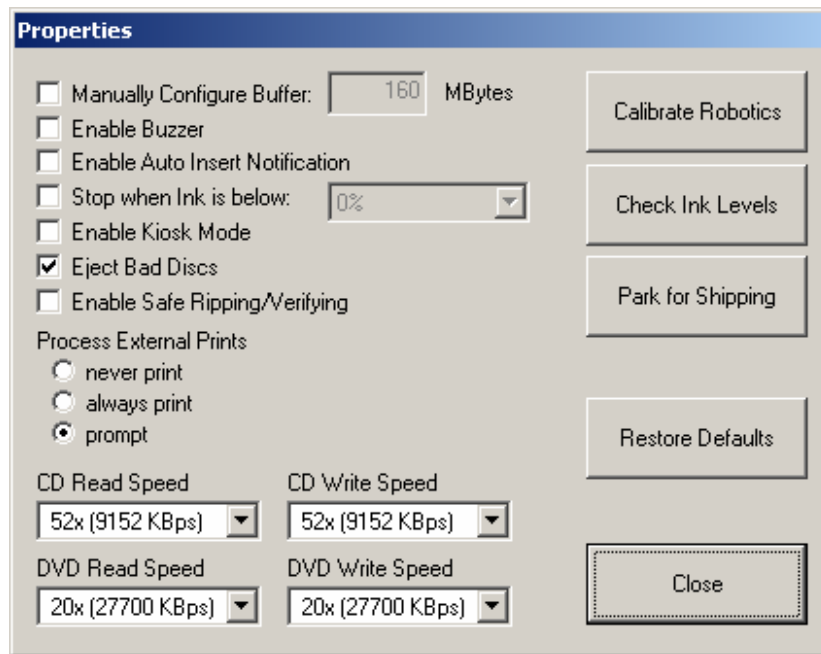


Transporting Your **DISC MAKERS**® Medley

Before transporting your Disc Makers Medley CD/DVD Publisher you must do the following:

1. With the printer powered ON, run the **DiscDirect** program and click on *Tools*, and then *Properties*, to see the following screen:



2. Click the *Park for Shipping* button. This will prompt you to remove baskets from the unit, and to insert the shipping pad into the right basket area, and to then click OK
3. The Disc Transport Robot will move to the right and down firmly against the foam packing. Place the smaller foam pad on top of, and to the right of the Disc Transport Robot.
4. Carefully close the printer cover. Click the OK button. The printer will automatically turn off.
5. **IMPORTANT:** Remove ALL ink cartridges from the Disc Makers Medley PRIOR to shipping!!!

The printer may now be packed in the original shipping carton, along with its accessories.