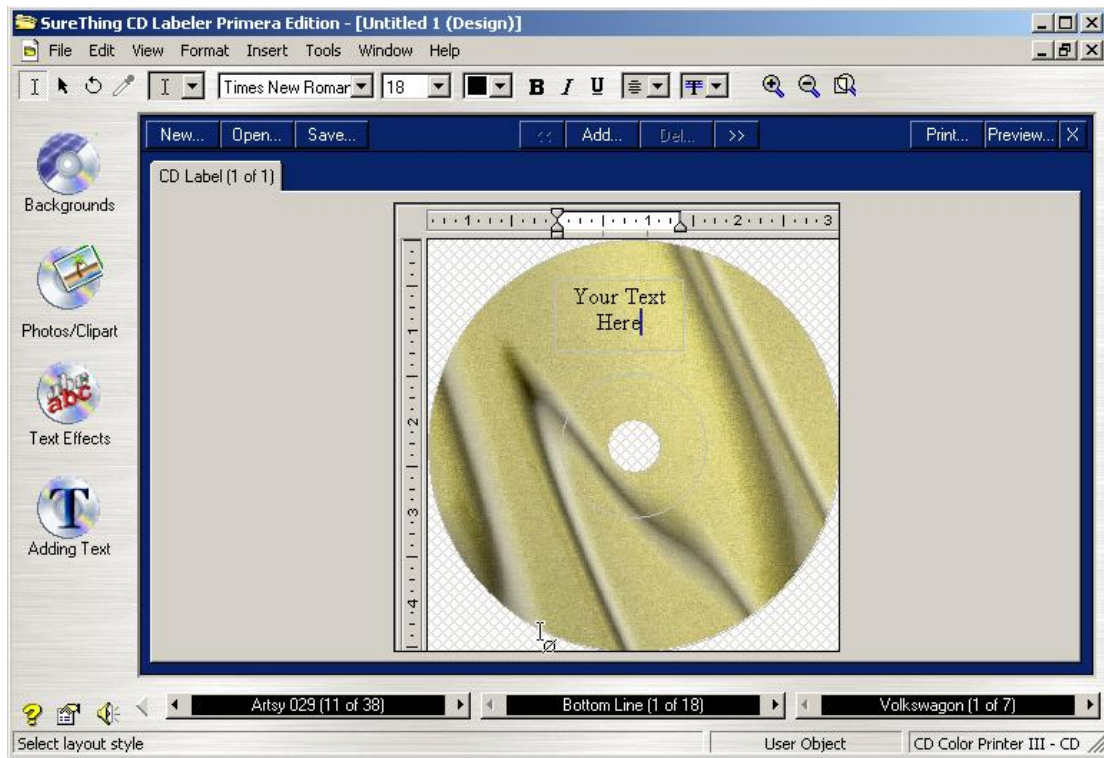


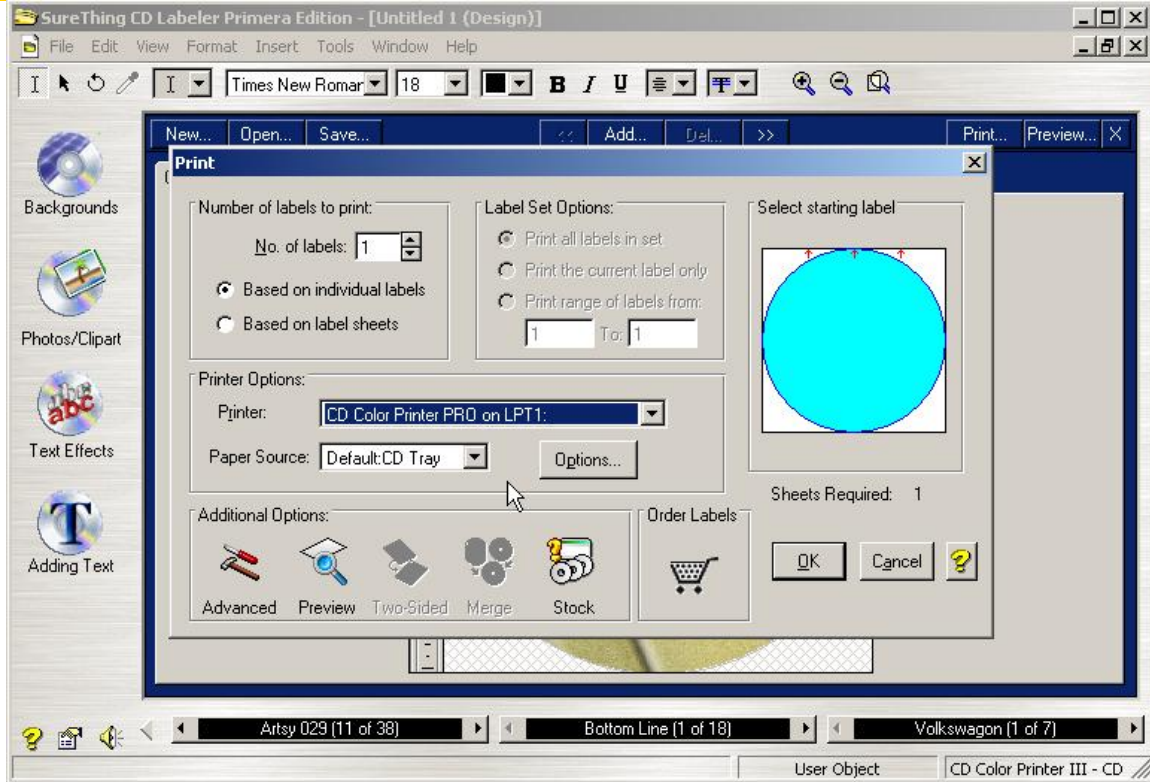


Steps:

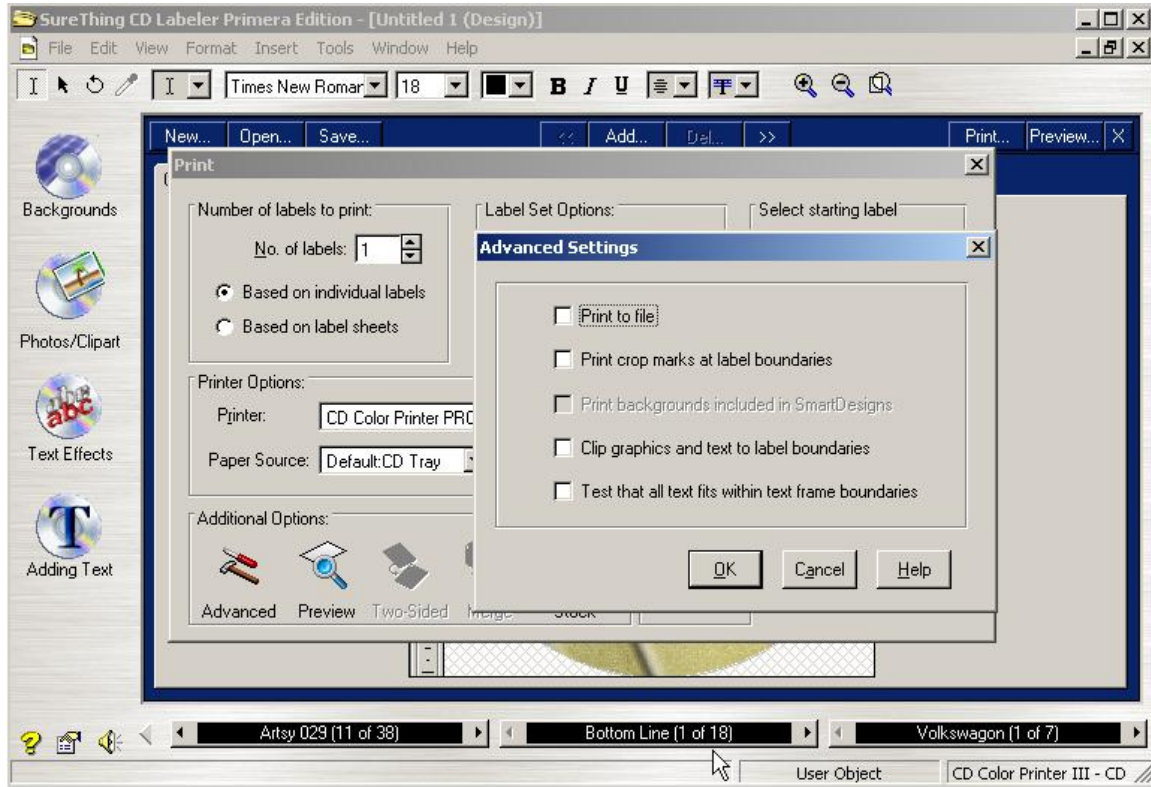
1. Begin by creating your label in SureThing Labeler.



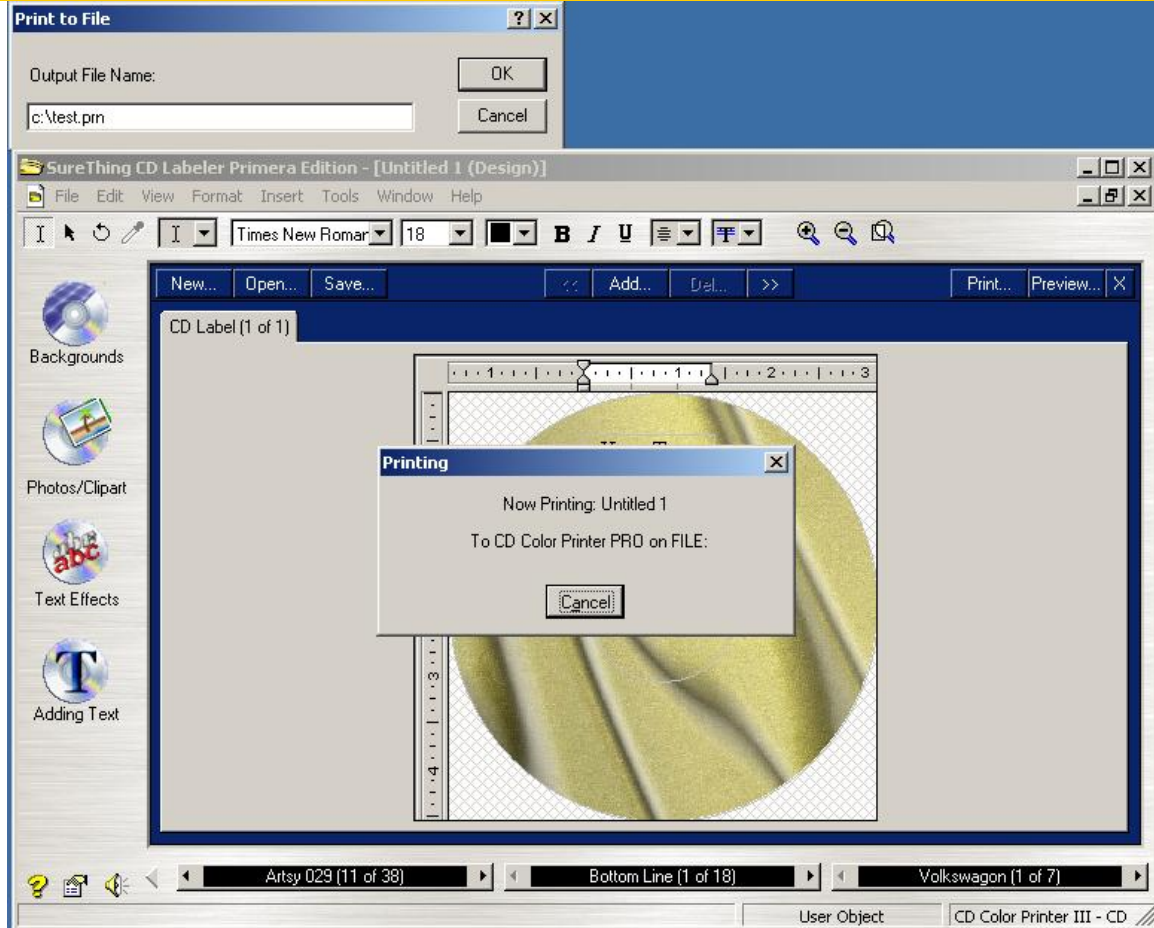
2. Goto “File” then “Print”



3. Go to additional options and click on advanced and then check the print to file box. Click OK.



4. Click OK on the main print screen. A “Print to file” dialogue box will appear, type in the location and file name with a .prn extension. Click OK. In this example I choose the root of the hard drive C: as the location and “test” as the file name.



5. It will create the Print File on the root directory of your “C:” drive. This will be the file you use in the automated duplication.