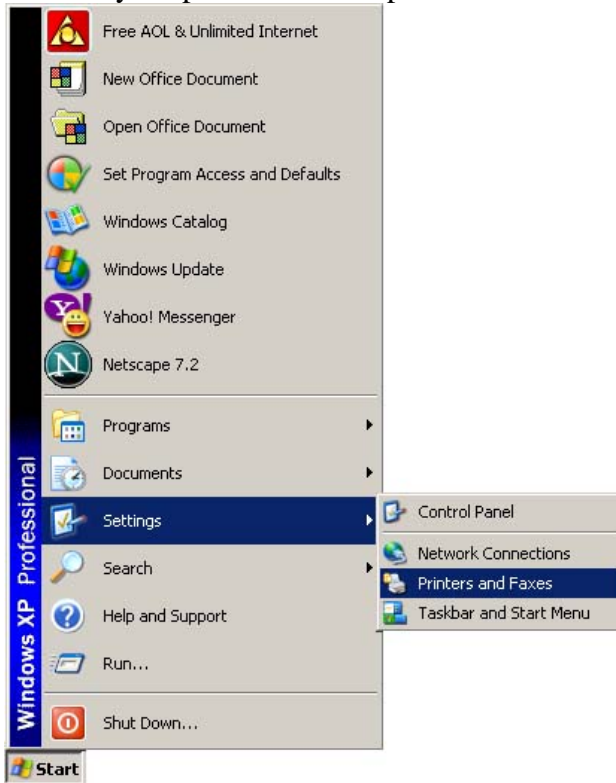


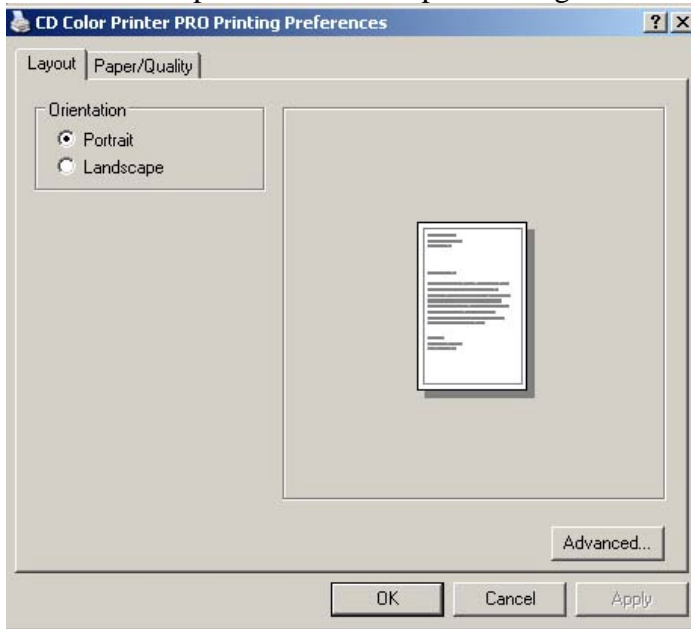
1. Go to your printers control panel.



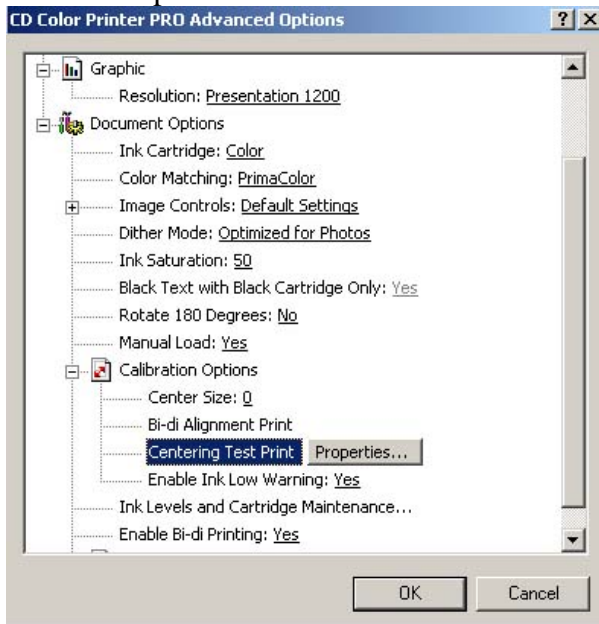
2. Right click on the "CD COLOR PRINTER PRO" or "CD COLOR PRINTER IV" depending on which printer you have.



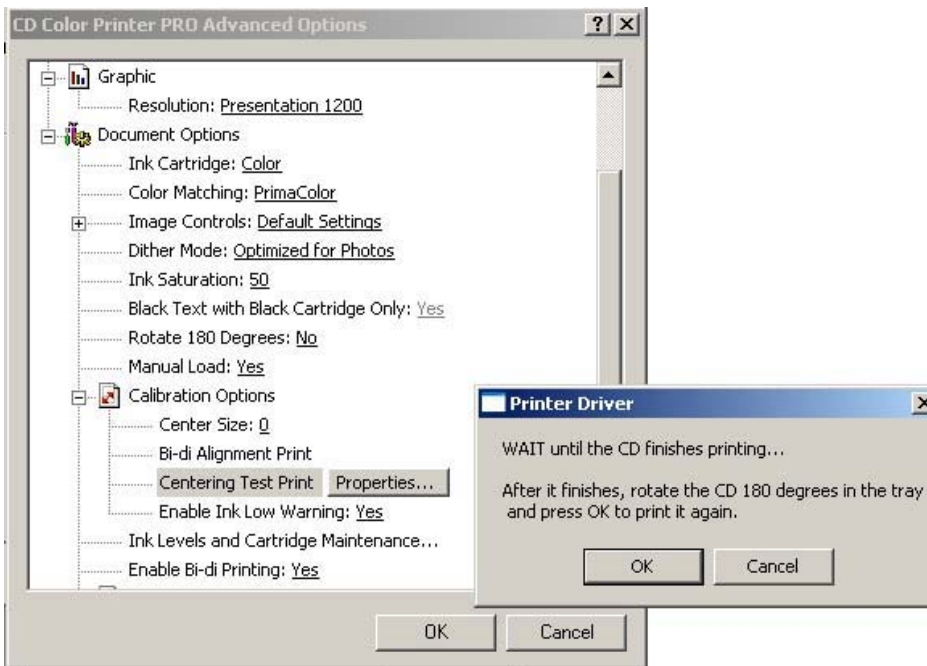
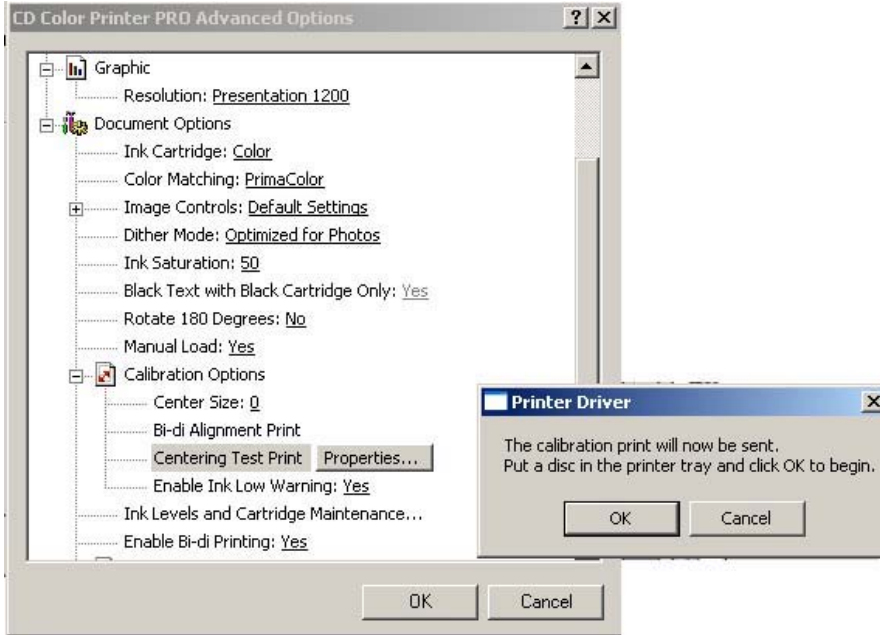
3. Depending on your driver you may have to click on the advance button on the next screen as per the next example. If not go to the next step.



4. Click on the "Calibration" check box and then click on "Centering Disc" and then on Properties.



5. You will then see the following screens, follow the on screen directions.



5. After the printer prints the disc, follow the instructions on the screen to complete.

