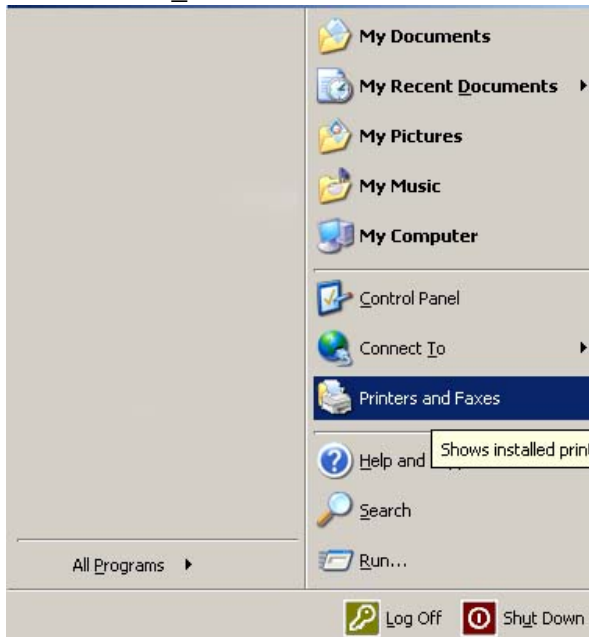
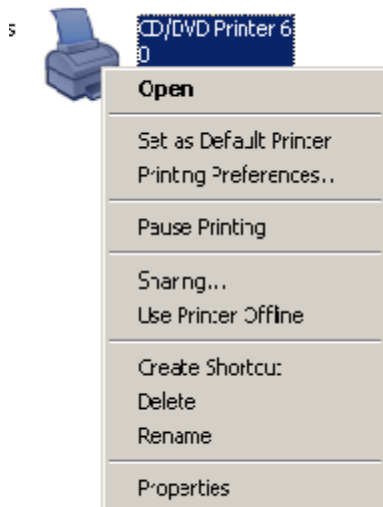




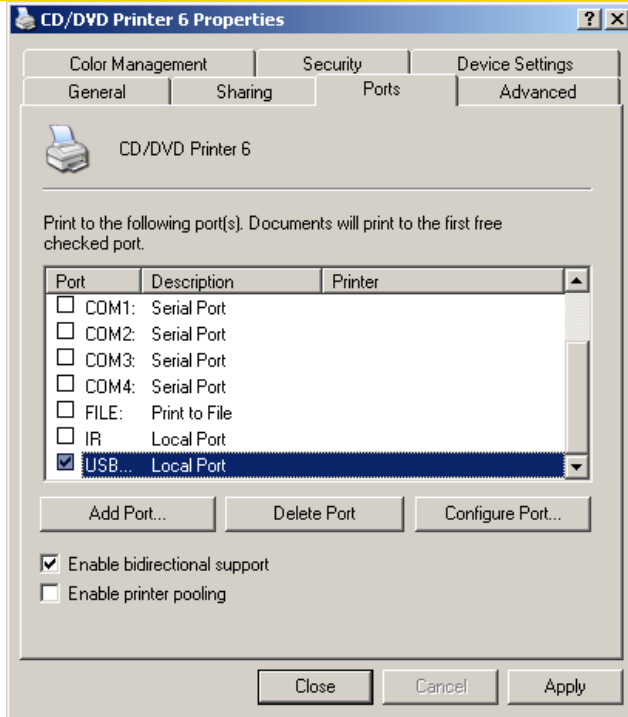
1. Close out of all programs and go to your “Printers Control” panel by clicking on **START\_Printers and Faxes**.



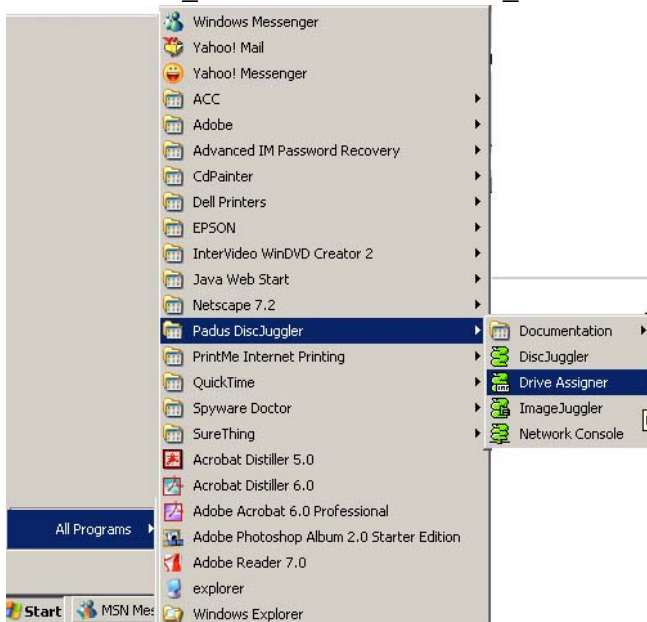
2. Right click on your CD PRINTER and left click on “Properties”.



3. Click on the “PORTS” tab. Move your cursor over the checked port. Note which port is listed; LPT1, USB001....



4. Close out of the printers control panel. Click on **START\_ALL PROGRAMS\_PADUS DISCJUGGLER\_DRIVE ASSIGNER**.



5. You will see a new screen with 2 windows. Once both windows are populated, place a check mark next the burner drive in your ELITE machine and on the top right side set the printer port to the proper setting.

